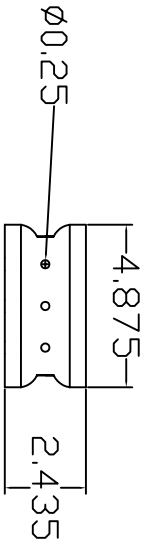


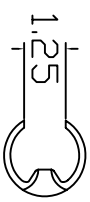
BACK VIEW



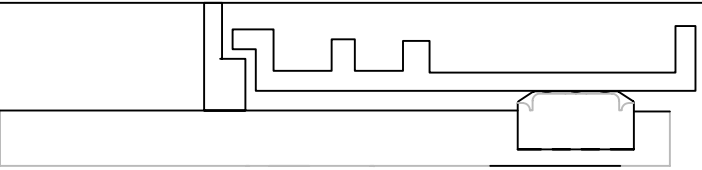
RIGHT VIEW



TOP VIEW



FLOAT TREE



MOUNT TOP OF BRACKET MIN. 3" FROM RISER TOP

FLOAT TREE:
1.25" OR 1.5" SCHEDULE 40 PVC
PIPE TO 1" LESS THAN THE
PUMP CHAMBER FLOOR AND
RISER TOP

ROUTE ALL ELECTRICAL CABLES
BETWEEN FLOAT TREE AND
HOLDERS. LEAVE ENOUGH CABLE TO
REMOVE FLOAT TREE FOR SERVICE.

PART#	STF-106FTB	DATE:	09/25/06
MATERIAL:	PVC	REV:	A
DRAWN BY:	JASON MAY	APPROVED BY:	
DESCRIPTION:	FLOAT TREE BRACKET		

