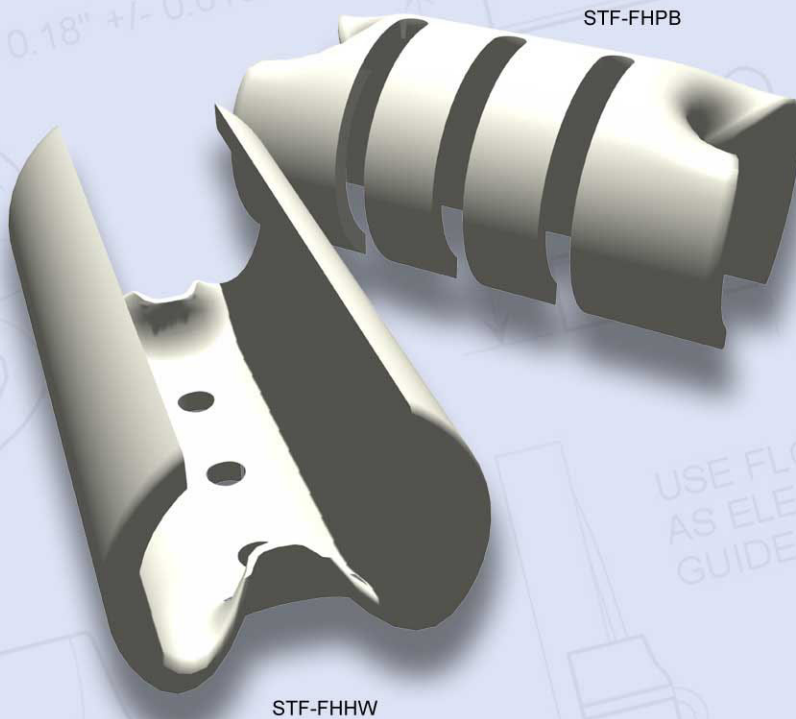


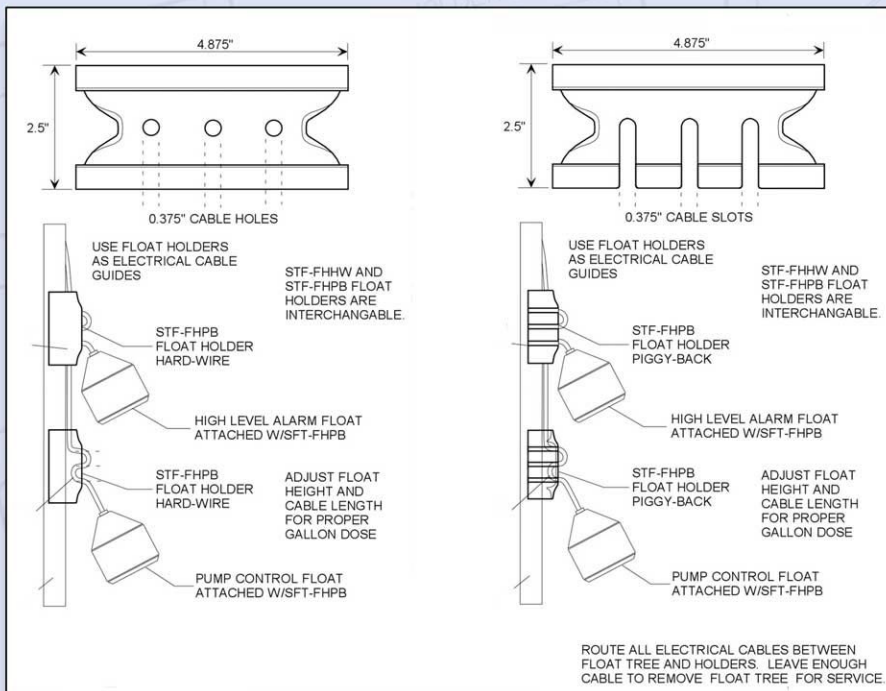
FEATURES

- ❖ Firmly clamps over the float tree pipe eliminating the need for straps
- ❖ The design holds the float holder in place securely but allows for easy float level adjustments
- ❖ Hard wire float holder has 3 holes which the float wiring is threaded through to hold the float in position
- ❖ Piggy back float holder has a slotted design that accepts piggy-back installations when the float wiring can't be threaded through holes
- ❖ Both float holders also allow for easy organization of float wiring-cables can be run under the float holder which keeps them close to the float tree to virtually eliminate tangled wires and float hang up



STF-FHPB

STF-FHHW



Order part No. STF-FHHW
 STF-FHPB

CAD detail drawing available in DXF format

RELATED PRODUCTS

- STF-106FTB-1.00 page 7
- STF-106FTB-1.25-1.50 page 7
- STF-JHOOK page 14